



Namibia Economic Growth Summit 2019

Economic Revival for Inclusive Growth
• Strengthening the Namibian House •

Investment Projects Catalogue

A: PRIVATE PROJECTS



1. PROJECT NAME: ONGOS VALLEY

PROMOTER

Ongos Valley Development (Pty) LTD

LOCATION

Windhoek, Khomas Region

SECTOR

Real estate, housing

BRIEF DESCRIPTION

Namibia's capital, Windhoek, is facing an influx of people from other parts of the country who are coming to the city in search of better economic opportunities. This population increase has created a backlog in housing projects and many residents are in need of decent affordable accommodation. Both the City of Windhoek and the Namibian government are encouraging Private Public Partnerships in housing provision. The Ongos Valley Project is an example of this approach, a private company that has come up with an initiative to provide affordable accommodation to Windhoek residents, with full support of the City of Windhoek and the government.

Ongos Valley plans to deliver 30,000 housing units over a 20-year period. The first phase of the project will run from 2019 to 2023 and will see 4,500 houses being delivered.

Ongos Valley Development (Pty) LTD has taken a holistic approach to the project. Ongos Valley will become a self-sustaining residential and commercial centre with schools, hospitals, institutions and support facilities. This approach means Ongos Valley residents will not have to travel to the other parts of the city for important social amenities. The project will also bring much needed infrastructure services to surrounding areas. The N\$4.3 Billion project is also expected to stimulate the construction industry, which has faced a slowdown in construction activities due to the overall economic slowdown.

IMPACT: The Ongos Valley project will create over 14,000 jobs (4,140 full-time and 9,860 part-time) and will also stimulate the construction industry with the N\$ 4.3 billion investment.

TOTAL INVESTMENT

N\$ 4.3 Billion (US\$308 Million)

IMPLEMENTATION PERIOD

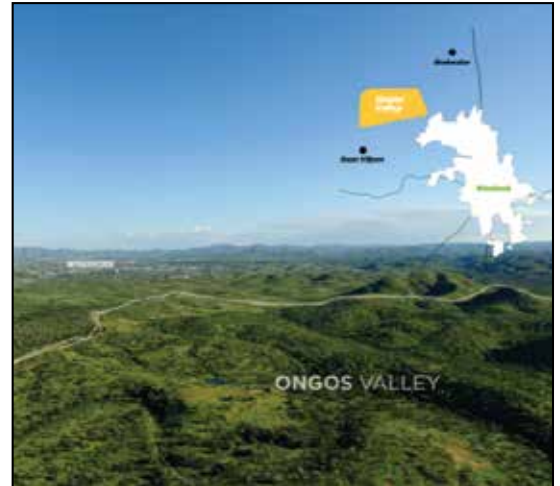
Phase 1: 5 years (60 Months)

CONTACT DETAILS

Americo De Almeida

Email: americo@aij.com.na

Mobile: +264 81 236 4466



2. PROJECT NAME: NAMIBIA NATIONAL, WINDHOEK, URBAN & RURAL CELLULAR-CLASS Wi-Fi SMART NETWORKED SOCIETY CITIES

PROMOTER

Icool ICT Connect Africa (Pty) Ltd

LOCATION

Windhoek City and surrounding areas, Okahandja, Reboboth, Otjiwarongo, Tsumeb, Rundu, Swakopmund, Langstrand, Walvis Bay, Oshakati, Ongwediva, Ondangwa and Katima Mulilo.

SECTOR

Information Communication Technology

BRIEF DESCRIPTION

This project comes at a time when the government has approved a broadband policy and is promoting the provision of government services through e-services. Icool ICT Connect Africa (Pty) Ltd is envisioning the growth of the Wi-Fi (wireless broadband) network in the country. The company has forecast that demand for a 24/7 internet access will increase for both commercial and residential usage.

IMPACT:

TOTAL INVESTMENT

N\$900 Million (US\$60,81 Million).

Icool ICT Connect Africa (Pty) Ltd believes that Wi-Fi Internet access packages will be a cost-effective way of satisfying customers' ever-increasing hunger for more bandwidth usage. The subscribers will benefit from Wi-Fi internet access at any place where there is coverage deployment in Namibia.

IMPLEMENTATION PERIOD

2 1/2 years

CONTACT DETAILS

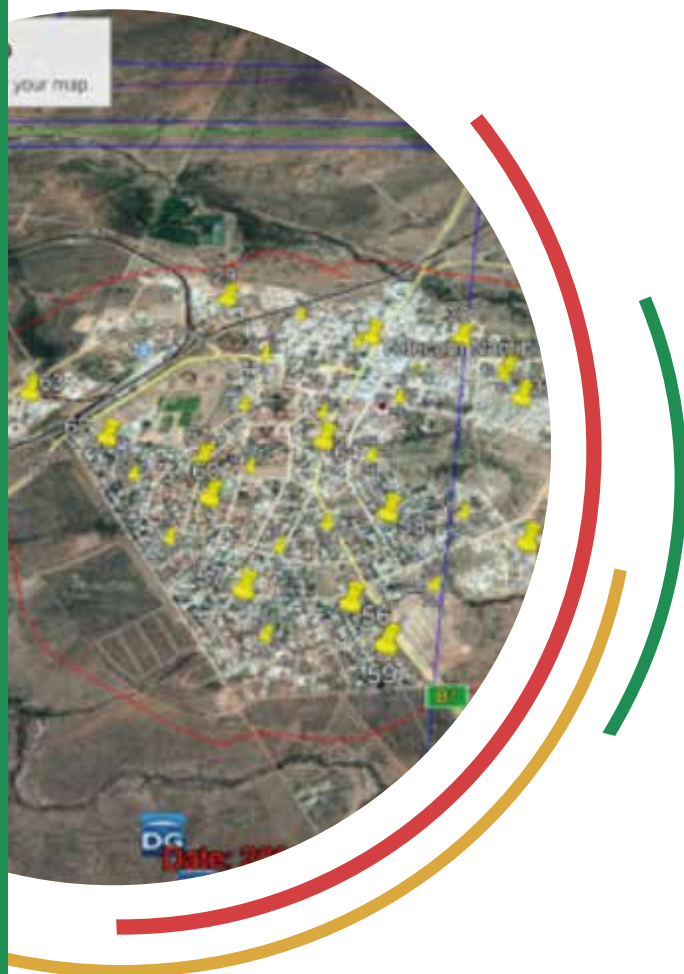
Rony Daou

Email: rdaou@tel-comsystem.com

Mobile: +264 81 258 1757, +1 438 8880338

Gavin Carlson and Mohammed Fahd

Icool ICT Connect Africa (Pty) Ltd, 259 Mimosa Road, Blackheath, Johannesburg, South Africa



3. PROJECT NAME: NAMBOTS MOBILE MODULAR REFINERY (MMR)

PROMOTER

Mega North Holdings (Pty) LTD

LOCATION

Walvis Bay, Erongo Region

SECTOR

Petroleum Products, Midstream Oil & Gas

BRIEF DESCRIPTION

The provision of fuel is very important for the Namibian economy. Mega North Holdings plans to construct and operate a 37,500-barrel per day barge-mounted refinery in Walvis Bay to provide clean fuels within the SADC region.

The company is planning to use the latest technology in fuel processing. The fuel processing facility, which will include storage, will take advantage of Namibia's strategic geographic position and ambitions to become a logistics hub within southern Africa. The port at Walvis Bay has been expanded as part of plans to become a logistic hub. The project will address southern Africa's impending clean fuel supply crisis brought on by changes in international protocols such as Euro V and Marpol VI, as well as the lack of refining capacity within the region, by developing an efficient refining solution that meets the highest international standards of environmental safety and product quality.

IMPACT:

The project has significant impact within Namibia's industrialisation and infrastructure development plans as well as SADC regional development. The project will provide 737 jobs during the construction phase as well as 342 direct and 100 indirect operational jobs.

Through its operation, the Nambots MMR will directly contribute to a 2.4% increase in Namibia's GDP and N\$760 Million in corporate income tax revenue to the government. The spinoffs of the project include increasing business opportunities for transport and logistics companies. State-owned companies that are expected to reap benefits from the project will be Namport, Transnamib and Namcor.

TOTAL INVESTMENT

N\$16.5 Billion (US\$1.18 Billion)

CONTACT DETAILS

Taamba lithete

Email: taamba@meganorth.one

Mobile: +264 81 205 4438

Samson Muhapi

Email: Samson@meganorth.one

Mobile: +264 81 710 0061



4. PROJECT NAME: BIOMASS MANUFACTURING

King-Size Investments (Pty) Ltd is an innovative start-up business that will process Biomass (Invader-Bush) into Medium Density Fibreboard (MDF) and other related boards such as particle board for use in panels used in the assembly of kitchen cabinets, built-in-cupboards and other types of knock-down furniture for distribution in SADC. Bush encroachment affects approximately 34-45 million hectares of rangeland.

This results in significant losses of productivity and of the livestock carrying capacity of farmland. Harvesting of Invader Bush is done through a process called “Bush Thinning”, as prescribed by Ministry of Environment and Tourism guidelines. The potential wood available for harvesting is 10 tonnes per hectare.

IMPACT: Exports to SADC countries will increase foreign exchange income for Namibia. The project will provide in excess of 1000 permanent jobs at harvesting sites, in excess of 100 permanent jobs at the factory, and an estimated 300+ temporary construction jobs. The project will indirectly boost beef production (and exports) through improved carrying capacity on rangeland and will help recover farm productivity.

TOTAL INVESTMENT

N\$1.1 billion (US\$ 85 million)

IMPLEMENTATION PERIOD

The project will be implemented 18 months after the financial close. This means that six months is the procurement phase and 12 months will be the construction phase.

CONTACT DETAILS

Frieda Aluteni

Email: felicity.aluteni@gmail.com

Tel: +26461-307028

Mobile: +26481 124 4595

Email: gohconsult@gmail.com

Mobile: +264 81 122 0180



5. PROJECT NAME: KOMSBERG FARMS

PROMOTER

Mr. Ali Albwardy
Al Seer Group LLC., P.O. Box 677
Dubai, UAE

LOCATION

Ariamsvlei, Karasburg Region

SECTOR

Agriculture

BRIEF DESCRIPTION

The Project involves construction of employee housing for 300 permanent and 1500 seasonal workers at a cost of N\$ 250 million. It also includes building a grocery store, a creche for children of employees, soccer fields, and provision for sanitation and clean drinking water. In terms of grape production, the project will see the development of a new grape plantation of 100 hectares at an estimated cost of N\$85 million, development of 125 hectares of citrus production at a cost of N\$ 86 million and the development of 100 hectares of lucerne production at a cost of N\$10 million. The project includes a cold-storage facility, a packing plant, farm equipment and solar plants for electricity generation.

IMPACT: The project will be a source of livelihood and employment for close to 1800 to 2000 Namibians. The majority of the produce is meant for export and is expected to earn Namibia US\$8 million per year, beginning 4 year after the project is completed. The project is expected to raise standards of agricultural practices and will assist in development of the Karasburg.

TOTAL INVESTMENT

US\$ 63 Million

IMPLEMENTATION PERIOD

5 years

CONTACT DETAILS

Jacques Cliff
General Manager
Email: j.clift@komsbergfarm.com.na
Tel: +264 63 69 3029

Carel Nieuwoudt
Chief Executive Officer and Director
Mobile: +27 82 849 9909

Johannes Holtzhausen
Promoter/Owner Representative
Email: J.Holtzhausen@finefarefood.com
Mobile: +97 150 625 9500



6. PROJECT NAME: GROOTFONTEIN CONTAINER DEPOT

PROMOTER

Grootfontein Container Depot (Pty) Ltd

LOCATION

Grootfontein

SECTOR

Logistics

BRIEF DESCRIPTION

Grootfontein is a town with a population of 30 000 inhabitants in the Otjozondjupa Region of central Namibia. It is one of the three towns in the agriculture production zone known as the Otavi Triangle, situated on the B8 national road that leads from Otavi to the Zambezi region and further into Zambia, Zimbabwe and DRC. The town has recently been linked to the Trans Kalahari Corridor, which leads to Gauteng via Botswana through the town of Gobabis via a bitumen standard road.

The investment project will comprise of three phases namely: (i) a container depot, including a container freight station, cold storage facilities and tailor-designed warehousing solutions and distribution; (ii) A bulk fuel storage depot for the storage and distribution of fuel throughout the northern region of Namibia and for export to the neighbouring countries; and (iii) a truck port with ablution facilities for long-distance drivers. The facility will be constructed on a 30-hectare piece of land allocated to the company by the Grootfontein Town Council.

IMPACT: The project will provide 200 jobs during construction phase and approximately 100 permanent direct employment and about 50 permanent through 3rd party services.

TOTAL INVESTMENT

N\$200 Million

*N\$ 77 Million for the Container Depot

*N\$120 Million for the Fuel depot with a truck port

IMPLEMENTATION PERIOD

4 years

CONTACT DETAILS

Charlton Useb

Email: gcondpot@gmail.com

Mobile: +264 81 416 4480



7. PROJECT NAME: OSHIKOTO FRESH FRUIT AND VEGETABLES

PROMOTER

Oshikoto Fresh Fruit & Vegetables Pty LTD

LOCATION

Oshikoto Region, Guinas Constituency, Tsumeb District

SECTOR

Agriculture

BRIEF DESCRIPTION

Oshikoto Fresh Fruit & Vegetables Pty LTD was established in 2005. The company is a 100% Namibian-owned business. It is situated in a region which is the best location for national, regional and international markets. Rainfall ranges between 450mm to 600mm. The current land under irrigation is 200 hectares and has a potential extra productive land of 600 hectares. The project has strong underground aquifers with a capacity of 27 to 130 cubic meters per hour. The project is also grid-powered with a 100 KW grid-feed solar system installed.

Potential crops for export markets include citrus fruits, avocados, onions and lucerne.

Current markets include local retailers, Congolese and Angolan markets. Oshikoto Fresh Fruit & Vegetables is seeking for equity partners in maize and wheat production, production of potatoes, onions, sweet potatoes, tomatoes, butternuts, carrots, watermelons, cabbages, green peppers and fruits.

IMPACT: The project contributes to food security and sustainability in Namibia, and will provide training for NUST, UNAM and vocational training centres. At full capacity, the project created 30 permanent jobs, 20 semi-permanent jobs, 40 seasonal jobs and 120 bi-seasonal jobs. An estimated 1500 households are expected to benefit from the project.

TOTAL INVESTMENT

N\$45 Million

IMPLEMENTATION PERIOD

The project was established in 2005. Project is still in production.

CONTACT DETAILS

Michael Iyambo

Email: mnciyambo78@gmail.com

Mobile: +264 81 124 4802

Dr. TCK Ihuhua

Email: ihuhuatch@gmail.com

Mobile: +264 81 129 8801



8. WALVIS BAY POWER PLANT (WBPP) AND WALVIS GASPORT (WGP)

PROMOTER

Walvis Bay Power Plant (Pty) Ltd, Walvis GasPort (Pty) Ltd

LOCATION

Walvis Bay, Erongo Region, Namibia

SECTOR

Power, Gas and Desalinated Water

BRIEF DESCRIPTION

The **WBPP** is an innovative, cost-effective and environmentally friendly solution to deliver affordable power into the SADC region. The power plant will use re-gasified liquefied natural gas (LNG) to generate 600MW base load power, utilising Combined Cycle Gas Turbines. WBPP's gas supplier, **WGP** will provide LNG to WBPP and the wider region through an innovative design combining a Floating Storage Unit, FSU and on-land re-gasification. The WBPP/WGP are complimentary projects.

IMPACT: WBPP aims to both sustain existing and attract additional foreign capital investment (e.g. manufacturing, mining industries), establishing 600 direct jobs during construction phases and 80 during operations. **WGP** will position Namibia as regional pioneer and leader in the LNG industry, provide for large-scale low-cost desalination of sea water, further social upliftment through job creation and secondary development for this sector. The WBPP and WGP projects will safeguard the supply of power, gas and water security in our country. Namibia will not only be self-sufficient, but also a net exporter of power and gas into the SADC region.

TOTAL INVESTMENT

The development of the project spans over the last 6 years; total cumulative spend to date is US\$29 million. Total investment amounts to US\$840 million: WBPP - US\$600 million; WGP - US\$160 million; Desalination Plant - US\$80 million.

IMPLEMENTATION PERIOD

Under the **WGP** a significant portion of the works have been completed as part of the new Walvis Bay North Port development. This project is within the master planning of Namport and can deliver first natural gas within 12 months after Financial Close. The full construction period, from start to finish is approximately 16 - 20 months. The construction of the desalination plant can be done in parallel with the natural gas plant.

CONTACT DETAILS

Boni Paulino

Email: bpaulino@namfisa.com.na

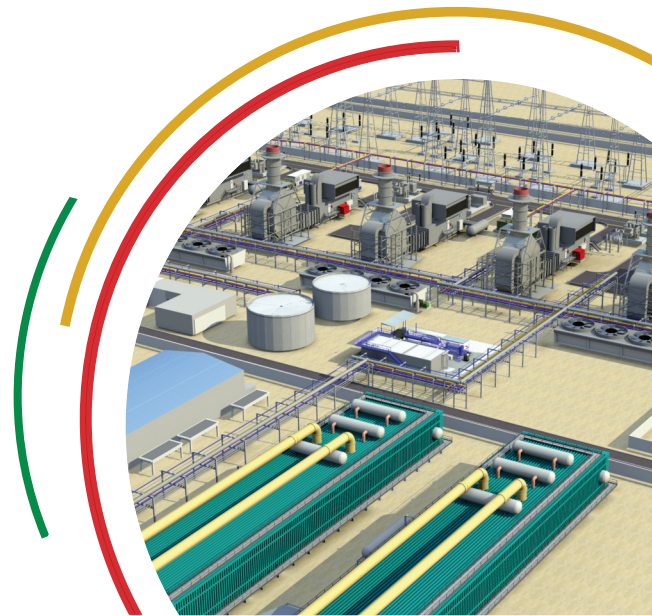
Mobile: +264 81128 9299

Hennie Steyn

Email: hennie@powerinvest.net

Herta Von Stiegel

Email: herta@ariyacapital.com



B: PUBLIC PRIVATE PARTNERSHIPS



1. PROJECT NAME: NAMIBIA INTERNATIONAL CONVENTION CENTRE

PROMOTER

Ministry of Industrialisation, Trade and SME Development

LOCATION

The Government of Namibia has acquired 20 hectares of land suitable for the development of an International Convention Centre in Windhoek, near the Windhoek Country Club Resort.

SECTOR

Meetings, Incentives, Conferences and Events

BRIEF DESCRIPTION

The project involves the development, operation, maintenance, marketing, and transfer, adjoining a convention/mixed-use centre in the capital. The development, operations and maintenance shall be guided by a set of pre-agreed quality and performance standards that shall become part of the contract signed between parties.

The returns on investment are highly dependent on the number of days the facility is hired for conferences, conventions, exhibitions and other events. The idea of developing a Convention Centre of international standard was strengthened by the need to reposition Namibia competitively in the highly dynamic global environment, by creating a niche for the meetings, incentives, conferences and events (MICE) sector. Windhoek is one of Africa's most modern, safest and cleanest cities.

IMPACT: Namibia is strategically located and possesses numerous attractions, attractive for international and regional events. In addition to direct flights to and from numerous destinations (or via Johannesburg), the proximity to South Africa and the frequency of flights between the two countries are added advantages.

TOTAL INVESTMENT

Total project cost is estimated at US\$109 million or N\$1.5 billion

IMPLEMENTATION PERIOD

Phase 1: Review of feasibility study and acquisition of land;

Phase 2: Signature of agreement, preparation of drawings and plans, and technical teams scout for fundraising;

Phase 3: Servicing of the land, ground-breaking, construction, and quality assurance;

Phase 4: Handover of building, payment of retention fees, inauguration and launch of centre;

Phase 5: Implementation, operation, and support services for the full and effective functioning of the centre.

CONTACT DETAILS

Dr. Michael Humavindu

Deputy Executive Director

Ministry of Industrialisation, Trade and SME Development

Email: humavindu@nti.gov.na

Tel: +26461 - 283 7332

Mobile: +264 81 155 6362



2. PROJECT NAME: OPERATION OF NEW CONTAINER TERMINAL AT THE PORT OF WALVIS BAY

PROMOTER

The Namibia Ports Authority (NAMPORT)

LOCATION

Walvis Bay

SECTOR

Transport and Logistics

BRIEF DESCRIPTION

The objective of the project is to explore Private Public Partnership (PPP) options to invest in and manage the new container terminal and in so doing to improve operational efficiency, increase throughput volumes, grow Namport revenue, refurbish and upgrade existing port facilities and develop new facilities at the port to meet the expected growing demand of the port's container services.

Impact: The new container terminal will have a throughput capacity of up to 750,000 TEU's per annum and the private operator is expected to optimise the new container terminal to improve operational efficiency, increase throughput volumes, and grow Namport revenue.

TOTAL INVESTMENT

Pending further investigations and studies, the project is estimated to cost US\$89 million.

IMPLEMENTATION PERIOD

The selection process for the Transaction Advisor (TA) is expected to commence in 2019 and the feasibility study will be conducted in 2020. Pending the finalisation of the feasibility study, the procurement process will commence in 2020.

CONTACT DETAILS

Kavin Harry

Acting Chief Executive Officer

Namport

Tel: +264 64 208 2209

k.harry@namport.com.na



C: GOVERNMENT PROJECTS



PROMOTER

Meatco Namibia

1. PROJECT NAME: REDUCING MEATCO'S ENVIRONMENTAL FOOTPRINT

LOCATION

Meatco Abattoirs - Windhoek and Okahandja , Khomas region
Rundu Abattoir – Rundu, Kavango East Region
Okapuka Feedlot near Windhoek, Khomas Region
Annasruhe Feedlot near Gobabis, Omaheke Region

SECTOR

Agriculture

BRIEF DESCRIPTION

Meatco has compiled a master plan on how to reduce its environmental footprint. During the scoping phase of the master plan, opportunities were identified and covered in the scoping report. The report records all possible opportunities identified and accumulated supporting data and information.

The report further reflects on benchmarking with similar processes, including the outcome of a desktop survey of international best practices and the investigation of possible coordination with other Namibian-based industries on similar aspects. As a result of the scoping report the following project was identified under Renewable Energy:

a) Implementation of Solar PV

The implementation of Solar PV is a self-embedded generation option to replace energy purchases from the grid. This will reduce maximum demand payments as an opportunity which presents a number of implementation options. The options considered for the purpose of the Master Plan are:

- Rooftop implementation at Windhoek facilities to offset high energy demand on the City of Windhoek connection;
- Rooftop implementation at Okahandja facilities to offset high energy demand on the Okahandja connection;
- Rooftop implementation at Rundu facilities to offset high energy demand on the Rundu connection;
- Ground-mounted installation at Gobabis Feedlot; and
- Central embedded option at Okapuka, and supply and/or wheeling of that energy to the different Meatco facilities through the distribution and transmission networks of the various distributors.

IMPACT: The project will be able to secure current foreign income streams for Namibia:

Meatco trades in the international market and needs to be competitive in the global market. Meatco yearly generates a turnover of N\$1,4 to N\$1,8 billion and 90% of the income is forex currency income to Namibia. The project will also help to safeguard international markets

It is a requirement of our international clients that we need to control and minimize our carbon footprint to make sure that these markets are available for Namibian producers. The potential loss of this international market is estimated to N\$1 billion to N\$1,2 billion per annum.

The project will enhance Namibia's international competitive status and sustainability:
With the huge energy bill that the company pays of N\$45 million every year, it has lost its international competitive edge which has had an impact on the prices that the foreign market could actually afford to pay to the Namibian producers. This contributed to more animals being exported to South Africa. With an increase in the purchase price, the company can keep the animals in Namibia and generate jobs and do value addition locally. If Okahandja Abattoir is open for slaughtering, it can create 450 additional jobs.

TOTAL INVESTMENT

Implementation of Solar PV: N\$23million (US\$1,6 million).

IMPLEMENTATION PERIOD

The next two years

CONTACT DETAILS

Tony Holbling

Meatco Group Engineer

Tel: +264 61 321 6400

Mobile: +264 81 1240 542

Email: THolbling@meatco.com.na

Jannie Breytenbach

Acting Chief Executive Officer

Tel: +264 61 321 6400

Mobile: +264 81 1289 019

Email: JBreytenbach@meatco.com.na



MEATCO

Namibia

2. PROJECT NAME: ESTABLISHMENT OF FEEDLOTS AND FODDER PRODUCTION PROJECT IN KAVANGO EAST AND KAVANGO WEST

LOCATION

Kavango East and Kavango West Regions

SECTOR

Agriculture

BRIEF DESCRIPTION

The Northern Communal Area (NCA)'s weakest link in the slaughter ox/cow production and slaughter market value chain is the poor condition, low carcass mass, low fat grades and old age at reasonable slaughter weight of cattle produced in the NCA.

Poor grazing conditions at the end of the rains following rains, and high cost of supplementary feed mean that those farmers' cattle cannot gain enough weight for the market. As a result, NCA experiences a net import of meat and meat products from the southern parts of Namibia. This results in production value losses and poses supply challenges to processing components of the value chain.

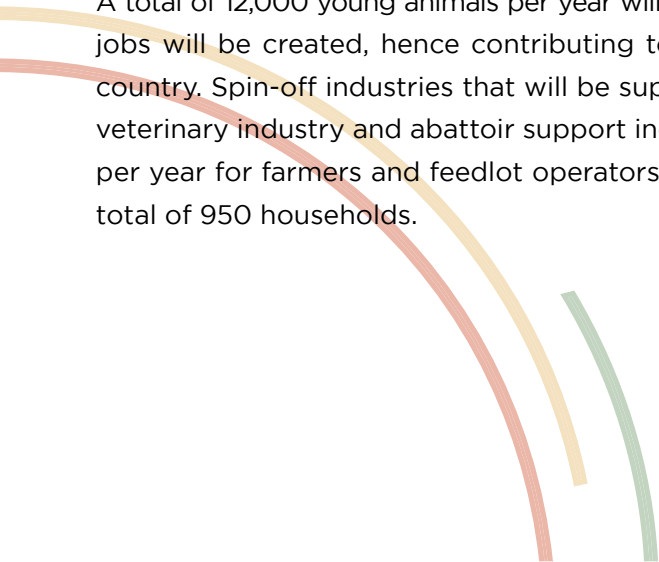
The purpose of the project is to establish feedlots and fodder production which will address current losses in value and simultaneously address the problem of quality as required by markets. The feedlots linked to the Green Scheme Fodder production will open up a weaner market, and produce slaughter-ready cattle to abattoirs.

Fodder, feedlot and abattoir enterprises of this project will be integrated to support the entire value chain from fodder production and feedlots to the abattoirs that will produce the required meat and meat products for markets in NCA, as well as African and international markets.

IMPACT: This project will enable the NCA to increase the competitiveness of the meat value chain, using vertical integration of the value chain and resultant savings, through bio-technology and excellent management and control systems. The project provides for an advantage for NCA to be able to produce animal feed crops under both rain-fed and irrigated conditions.

The project will enhance market access for NCA livestock farmers by facilitating market development in NCA, Africa and internationally. The project will open up a weaner market and ensure that quality is enhanced for meat and meat products from the NCA.

A total of 12,000 young animals per year will go through the feedlot system. It is expected that 600 additional jobs will be created, hence contributing towards increased economic growth of the regions and of the country. Spin-off industries that will be supported include feed suppliers and producers, transporters, the veterinary industry and abattoir support industries. The project will unlock a total income of N\$188 million per year for farmers and feedlot operators. The project will improve the income and living standards of a total of 950 households.



TOTAL INVESTMENT

The project will require N\$150 million (USD 10,7 million).

IMPLEMENTATION PERIOD

The implementation period of the project is two years (2019 to 2020).

CONTACT DETAILS

Mr. Kingsley Kwenani

Executive: Meatco Foundation

Tel: +264 61 321 6400

Email: KKwenani@meatco.com.na

Jannie Breytenbach

Acting Chief Executive Officer

Tel: +264 61 321 6400

Mobile: +264 81 1289 01

Email: JBreytenbach@meatco.com.na



PROMOTER

Namibia Water Corporation

Water scarcity remains one of the most pressing environmental issues of the century. The lack of fresh water resources to meet consumption demand affects every continent. Namibia is a semi-arid country, and the rainfall patterns have mostly been erratic. Projects to the value of N\$ 3,3 billion are earmarked to address these deepened concerns. These include bulk water projects to the tune of N\$ 3,1 billion, reclamation projects to the value of N\$450 million and rural water projects amounting to N\$ 1,5 billion respectively. In addition, grants have been secured to aid cross-cutting projects in capacity development through training.

LOCATION

All Regions

OUTLINE OF PROJECTS

Project Name	Estimated TOTAL Cost (N\$) incl VAT	Estimated Requirement FY2018/19 (N\$) incl VAT	Estimated Requirement FY2019/20 (N\$) incl VAT	Estimated Requirement FY2020/21 (N\$) incl VAT	Estimated Requirement FY2021/22 (N\$) incl VAT	Estimated Requirement FY2022/23+ (N\$) incl VAT
Completion of CAN short term projects						
Kombat & Berg Aukas power supply upgrade	9,800,000	2,300,000	7,500,000			
Omatako to Von Bach pump stations refurbishment	9,500,000	9,500,000				
Subtotal Phase 1 Projects	19,300,000	11,800,000	7,500,000			
NamWater Emergency Projects						
Central Area of Namibia (CAN)						
Abenab borehole development and linking with ENWC	644,200,000		17,100,000	6,100,000	192,000,000	429,000,000
- drilling of boreholes, EIA, preliminary design	21,600,000		17,100,000	4,500,000		
- final design and procurement	1,600,000			1,600,000		
- construction	621,000,000				192,000,000	429,000,000
Central Northern Area (CAN)						
Oshakati Purification Plant Extension	554,300,000	20,000,000	240,000,000	240,000,000	54,300,000	
- EIA, process and preliminary design	20,000,000	20,000,000				
- final design, procurement and construction	534,300,000		240,000,000	240,000,000	54,300,000	
Ohangwena No 2 Well Field	24,400,000	600,000	700,000	21,800,000	1,300,000	
- EIA, process and preliminary design	1,300,000	600,000	700,000			
- final design and procurement	23,100,000			21,800,000	1,300,000	
Central Coastal Area (CCA)						

Kuiseb Collector 2 Schwarzekuppe Swakopmund Phases 2 and 3	418,000,000			200,000,000	200,000,000	18,000,000
- final design, procurement and construction	418,000,000			200,000,000	200,000,000	18,000,000
Omdel-Wlotzkasbaken pipeline replacement	240,000,000				110,000,000	130,000,000
- final design, procurement and construction	240,000,000				110,000,000	130,000,000
Rundu Urban Area (RUA)						

Rundu Purification Plant Extension	679,000,000	35,000,000	288,000,000	288,000,000	68,000,000	
- EIA, process and preliminary design	35,000,000	35,000,000				
- final design, procurement and construction	644,000,000		288,000,000	288,000,000	68,000,000	
Subtotal NamWater Emergency Projects	2,559,900,000	55,600,000	545,800,000	755,900,000	625,600,000	577,000,000
City of Windhoek Emergency Projects						
Gammams Reclamation Extension	515,000,000	7,500,000	7,500,000	220,000,000	220,000,000	60,000,000
- pilot plant	15,000,000	7,500,000	7,500,000			
- detail design, procurement and construction	500,000,000			220,000,000	220,000,000	60,000,000
Subtotal City of Windhoek Emergency Projects	515,000,000	7,500,000	7,500,000	220,000,000	220,000,000	60,000,000
TOTAL FOR ALL PROJECTS	3,094,200,000	74,900,000	560,800,000	975,900,000	845,600,000	637,000,000

TOTAL INVESTMENT

Programme budget amounts to N\$3,3 billion

IMPLEMENTATION PERIOD

5 Years

CONTACT DETAILS

Ms. Maria Amakali
 Director: Directorate of Water Resource Management
 Ministry of Agriculture, Water and Forestry
 Tel: +264 61 208 7161
 Mobile: +264 81 290 0823
 Email: Maria.Amakali@mawf.gov.na

Ms. Kadiva Hamutumwa
 Chief Strategy Officer & New Business Development
 Namibia Water Corporation
 Tel: +264 61 71 2159
 Mobile: +264 81 122 2869
 Email: HamutumwaK@namwater.com.na

PROMOTER

NamPower (Pty) Ltd

The national power utility has its core business regulated under the Electricity Act. The utility is registered as a company and operates according to the laws of Namibia inclusive of the Companies and the Public Enterprises Governance Acts, under the guidance and direction of a Board of Directors. NamPower's core business is electricity generation, transmission and energy trading, with the trading being done within the Southern African Power Pool (SAPP). NamPower supplies bulk electricity to Regional Electricity Distributors (REDs), Mines, Namwater and Local Authorities (where REDs are not operational) throughout Namibia.

1. PROJECT NAME: OTJIKOTO BIOMASS POWER STATION

LOCATION

15km from the town of Tsumeb

BRIEF DESCRIPTION

The project entails the development of a 40MW Biomass Power Station utilising Namibian encroacher bush as the fuel source. Bush encroachment in Namibia affects 26 million hectares of potential agricultural land for livestock and food production.

The power station will assist NamPower to strengthen its domestic local generation mix and further stabilise the national power grid with a fully dispatchable energy source which could provide baseload energy. The project also brings a number of macro and micro-economic benefits which include, improved livestock-carrying capacities through increased rangelands and agricultural productivity, increased groundwater within the harvested areas, displaced carbon dioxide emissions to the benefit of the region, contribution to the Gross Domestic Product (GDP) of Namibia and direct and indirect job creation throughout the fuel supply chain and the operation of the power station.

TOTAL INVESTMENT

Total Project Estimate: N\$1.9 billion (US\$135 million)

IMPLEMENTATION PERIOD

Project Completion date for the power station is planned for January 2023.

CONTACT DETAILS

Dr. Grant Muller

Head, Generation Projects

Tel: +264 61 205 2393,

Email: Grant.Muller@nampower.com.na

Joe Mukena

Senior Manager : Strategic Finance

Tel : +264 61 2052752

Email : Joe.Mukena@nampower.com.na

2. PROJECT NAME: OMBURU PV POWER PROJECT

LOCATION

12km south east from the town of Omaruru

BRIEF DESCRIPTION

The project involves the development of a 20MW Solar PV Project close to the town of Omaruru. Namibia is blessed with some of the best solar irradiation in the world; the estimated capacity factor of this project is approximately 36%.

The key benefits of the project are to reduce the overall NamPower tariff to the customer by introducing an affordable renewable energy to the Namibian grid and supporting renewable commitments prescribed in the Renewable Energy Policy and National Energy Policy.

TOTAL INVESTMENT

N\$488 million (US\$35 million).

IMPLEMENTATION PERIOD

Project Completion for the power plant is planned for October 2020.

CONTACT DETAILS

Dr. Grant Muller

Head Generation Projects

Tel: +264 61 205 2393

Email: Grant.Muller@nampower.com.na

Joe Mukena

Senior Manager : Strategic Finance

Tel : +264 61 205 2752

Email : Joe.Mukena@nampower.com.na

3. PROJECT NAME: FIRM (ANIXAS II) POWER STATION

LOCATION

Walvis Bay, Namibia

BRIEF DESCRIPTION

The project entails a 50MW power plant utilising either Internal Combustion Reciprocating Engine (ICRE) or Gas Turbine (GT) technology with liquid fuel (LFO/HFO) or LNG/CNG as fuel options. The power station will be owned and operated by NamPower, and its purpose will be to ensure that dispatchable power is available to cater for emergency power to the Namibian grid during times of shortage within the Southern African Power Pool (SAPP) and to help minimise or avoid load-shedding. This power station could also be dispatched to cater for Renewable Energies intermittency events and thereby indirectly support Namibia's commitments to increase their share of renewable energy.

TOTAL INVESTMENT

N\$ 1.2 billion (US\$ 86 million).

IMPLEMENTATION PERIOD

Project completion for the power station is planned for February 2022.

CONTACT DETAILS

Dr. Grant Muller

Head Generation Projects

Tel: +264 61 205 2393

Email: Grant.Muller@nampower.com.na

Joe Mukena

Senior Manager : Strategic Finance

Tel : +264 61 2052752

Email : Joe.Mukena@nampower.com.na



4. PROJECT NAME: 50MW WIND IPP PROJECT

LOCATION

Near Lüderitz, Namibia

BRIEF DESCRIPTION

NamPower will procure Independent Power Producers (IPP's) to develop one 50MW Wind projects through a transparent and open public competitive bidding process.

The key benefits of the Project are to:

- Reduce the overall NamPower tariff to the customer by introducing an affordable “newbuild” renewable energy to the Namibian grid;
- Supporting renewable commitments prescribed in the Renewable Energy Policy and National Energy Policy.

TOTAL INVESTMENT

N\$1.24 billion (US\$88 million).

IMPLEMENTATION PERIOD

Target commercial operation date for the Power plant is scheduled for June 2022.

CONTACT DETAILS

Ben Mingeli

Tel. +264 61 205 2465

Email: ben.mingeli@nampower.com.na

Joe Mukena

Senior Manager : Strategic Finance

Tel : +264 61 2052752

Email : Joe.Mukena@nampower.com.na

5. PROJECT NAME: 20 MW SOLAR PV IPP PROJECT

LOCATION

To be determined

BRIEF DESCRIPTION

NamPower will procure Independent Power Producers (IPP's) to develop one 20MW Solar Project through an open and transparent public competitive bidding process.

The key benefits of the project are to reduce the overall NamPower tariff to the customer by introducing affordable renewable energy to the Namibian grid and renewable commitments prescribed in the Renewable Energy Policy and National Energy Policy.

TOTAL INVESTMENT

N\$400 million (US\$28 million).

IMPLEMENTATION PERIOD

Target commercial operation starting date for the power plant is scheduled for 2022.

CONTACT DETAILS

Ben Mingeli

Tel. +264 61 205 2465

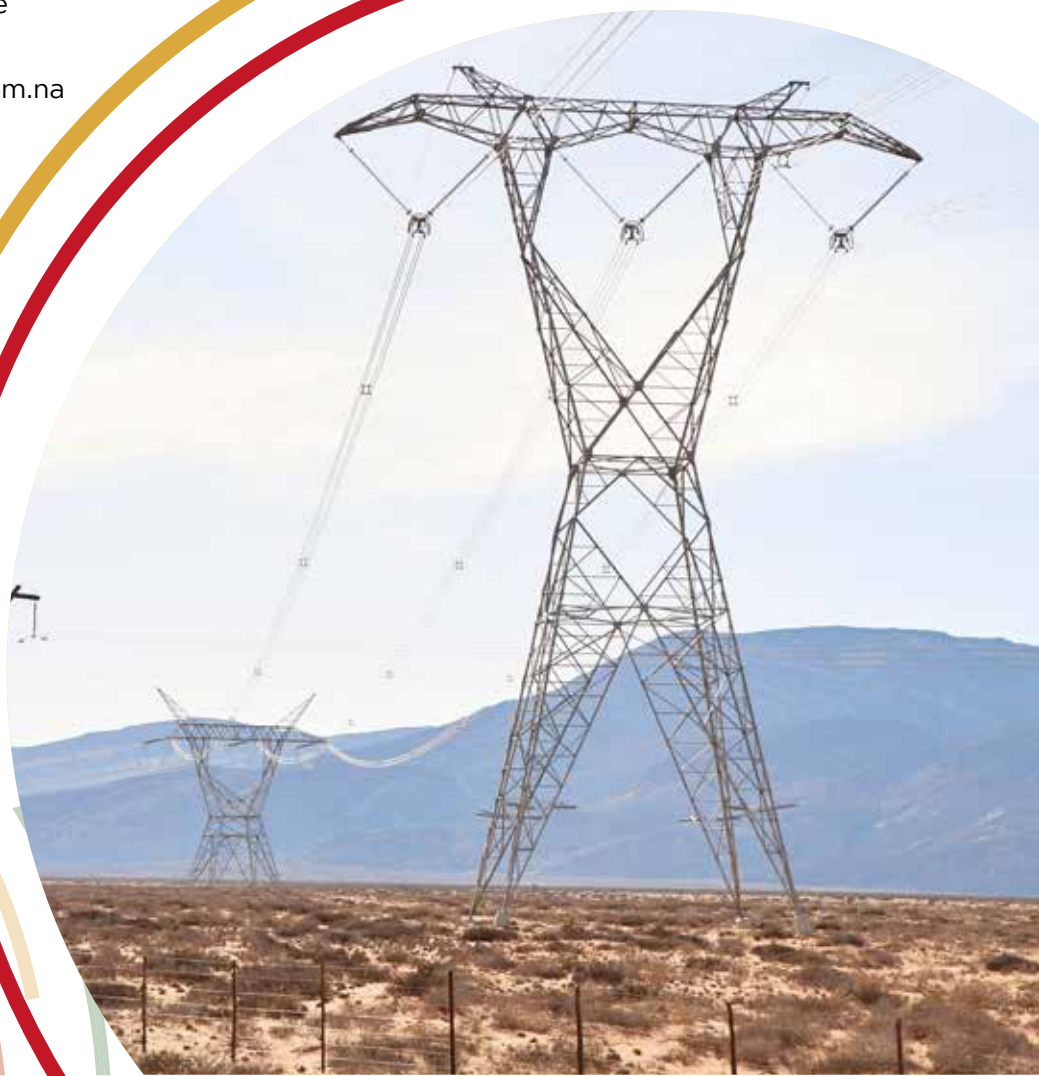
Email: ben.mingeli@nampower.com.na

Joe Mukena

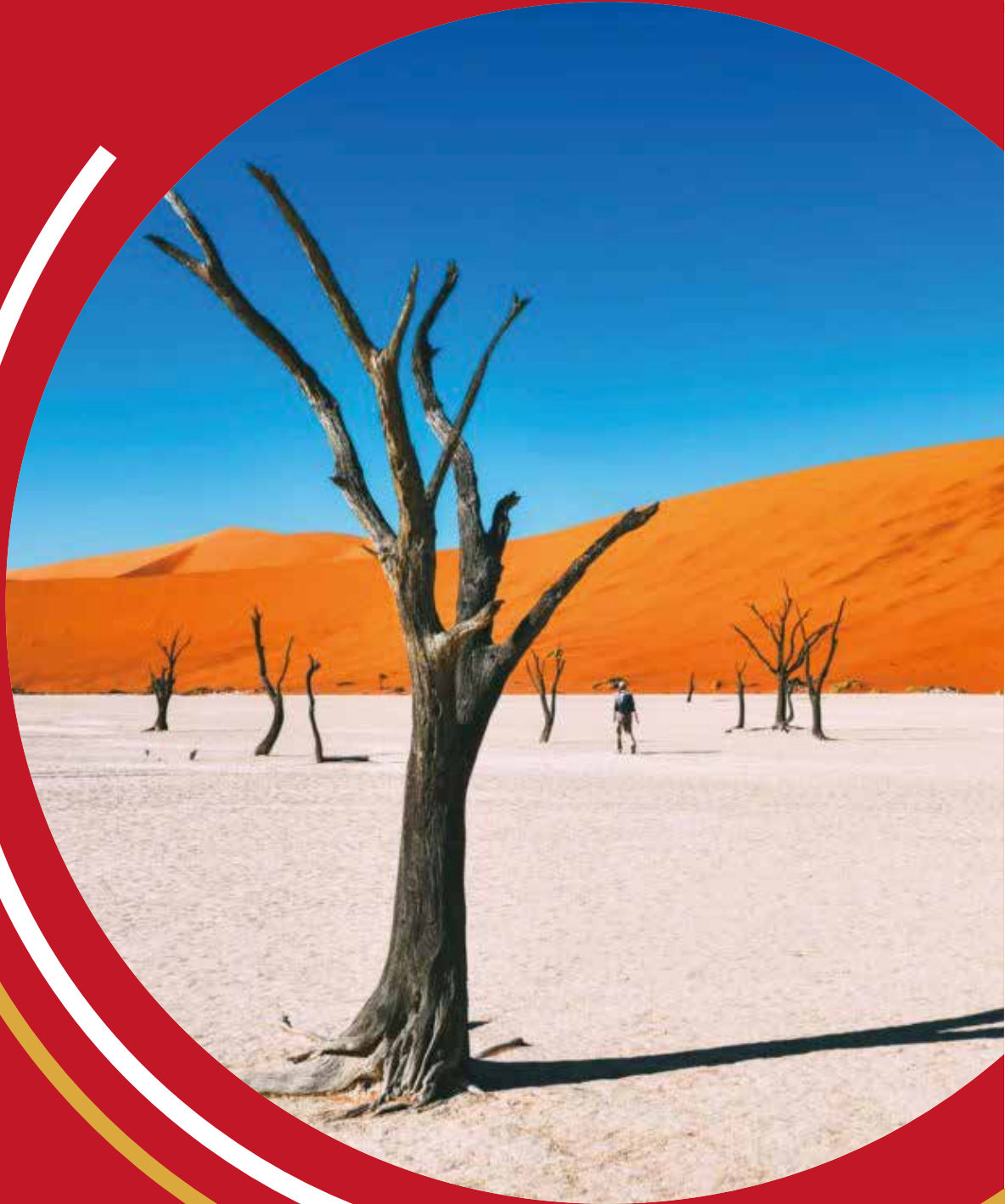
Senior Manager : Strategic Finance

Tel : +264 61 2052752

Email : Joe.Mukena@nampower.com.na



D: REGIONAL PROJECTS



Regional Profiles

1. Kunene region

The Kunene Region is seeing more investments in sectors such as agriculture, tourism and mining. Adventure tourism is one of the fastest-growing sectors. During the 2019/20 financial year a budget of N\$400 million was allocated to this region.

The improvement of education and sanitation has been placed as the top priority in the Kunene Region. As the region is rich in natural resources, processing these resources locally would lead to job creation throughout the vast region.

Another area of potential for investors is the construction of an aerodrome facility. The ICT sector in the Kunene Region is not fully developed, and the region also has huge potential for cattle farming but the lack of a regional abattoir hampers the development of this sector.

2. Omusati Region

Home to the Ruacana falls, a major tourism attraction in Namibia, this region boasts a canal which carries water from the Okavango River at Ruacana to Oshakati, passing through Outapi. Water from the canal is used to irrigate a large state-run farm at Etunda where crops like maize, bananas and watermelons are grown.

The region is generally known as an agricultural region. To date this region has one of the lowest percentages of sanitation provision, with only 17% of its population having access to adequate sanitation facilities. The town of Outapi in this region borders Angola, so the region has the potential to become an export hub.

3. Oshana Region

The current focus areas for this region are 1) to establish a Northern Tourism and Convention Centre, as well as 2) construction of low-cost housing. This region holds the second largest population concentration in Namibia, after the capital city, Windhoek. Its economic hubs are Ondangwa, Ongwediva and Oshakati, while the rural areas in this region remain mostly underdeveloped. Thus decentralisation continues to be a goal that needs to be achieved in its full capacity. There are plans to establish an animal feed plant, as cattle do well in this region and herds are extensive.

4. Ohangwena Region

The UNDP has dubbed Ohangwena as one of the poorest regions in Namibia, although there is great agricultural potential in the region. The region is also home to the Ohangwena Aquifer project, which has potential to supply water both to the region and to the rest of the country. The eastern part of the region possesses good grazing land; however is currently uninhabitable due to water shortages and poor communications. This leaves a gap for the development of ICT, as well as water projects. The focal development points in this region are water supply and sanitation.

5. Oshikoto Region

Cattle rearing and mining are the main economic activities in this region, with copper mining being the leading economic activity. Areas of potential for investors include higher educational training facilities as well as vocational training centres. The majority of the Oshikoto Region is communal farmland. The 'One Region One Nation' project proves promising with unique projects under its wings, one of which is a

paper-making project, whereby mahangu (millet) stalks are transformed into paper. This project has potential to expand into the SADC market and beyond.

6. Zambezi Region

The construction of a gravel road stretching 50km from Isize to Sifuha to Malindi and Schuckmannsburg, and costing N\$60 million, is the most noteworthy expenditure on the Zambezi Region's Development Budget for the current financial year. Statistics show that this region is underperforming in all of sectors of agriculture, despite the fact that Namibia's most fertile tracts of land can be found in the region. Green scheme projects hold great potential for this region.

Other projects in the region include the upgrading of the Mpacha Airport as well as the construction of the Mpacha military base and the construction of a community Learning Development Centre. With sound and viable economic projects, this region is set to grow exponentially, given that it is a gateway to neighbouring countries such as Angola, Botswana, Zambia and Zimbabwe.

7. Erongo Region

This region is the principal home of Namibia's fishing industry. It also includes Namibia's uranium belt and is one of the biggest producers of uranium in the world. Erongo is home to Namibia's first desalination plant and offers investors opportunities to invest in other desalination plants that would contribute to the water supply security in the country. Tourism is a major industry in the region, which boasts towns such as Swakopmund, which is popular on tourists' lists.

8. Otjozondjupa Region

This region has great potential for farming activities and agro-processing. The region has the advantage of combining communal and commercial farming in the same region and offers investors potential farming projects.

9. Omaheke Region

This region includes Gobabis, which is the centre of the area. Omaheke's economic activities revolve mainly around cattle farming. There is a need in the region for diversification into cash crops rather than depending only on cattle ranching.

10. Khomas Region

This region is the seat of central government and is where the capital city Windhoek is situated. The region, which is the biggest population centre in Namibia, offers potential investors with many opportunities.

These include the construction of a forensic laboratory in Windhoek and the upgrading of the Eros and Hosea Kutako International Airports that are developmental priorities in this region. These offer potential investors opportunities through Private Public Partnerships.

11. Hardap Region

The bulk of the Regional Development Budget in this region is allocated to early childhood development centres, making education a focal point. Roads and health infrastructure are developmental priorities. The SME sector in this region consists of weaving, leather works and a tannery, and desires to expand. A photovoltaic power plant located near the city of Mariental is the first large-scale plant of its kind in Namibia. This region is one of two—along with Otjozondjupa Region—to welcome solar power technology. Hardap Region is a great area of investment for a country that is looking to increase solar power generation.

12. //Karas Region

This is the least densely populated region in Namibia. !Karas Region boasts a myriad of natural and mineral resources, with huge potential for growth, Fifteen of this region's boreholes are in need of rehabilitation for drought relief in the region. Fishing, boat-building and diamond mining along the coast of this region present potential for the logistics industry.

13.Kavango East Region

While the construction of garment factories is currently a top priority for this region, agriculture holds potential. Given that this region receives good rainfall compared to other parts of Namibia, it has good potential for the cultivation of various crops.

Organised forestry and agro-forestry, which stimulate carpentry and related industries, is an equally promising sector for investment. With many development projects on the cards, the region offers investors many opportunities.

14.Kavango West Region

Similar to its sister region, agriculture in the region is poised to boost development on the western side. There is agricultural potential for the cultivation of various crops, due to high quantities of rainfall. Organised forestry and agro-forestry, which stimulate carpentry and related industries, offer equally high potential for investment.



Image Reference: Project Situated in the Erongo Region: Walvis Bay Power Plant & Walvis Gas Port



NAMIBIA REGIONAL GOVERNORS OFFICE CONTACT DETAILS

1. Erongo Regional Council

Governor Hon. Cleopas Mutjavikua
Tel No: 064 410 572/8
Email: farita@erongorc.gov.na
bsitude@erongoog.gov.na

2. Hardap Regional Council

Governor Hon. Esmé Isaack
Tel No: 063 245 837
Email: peiseb@hardaprc.gov.na

3. //Karas Regional Council

Governor Hon. Lucia Basson
Tel No: 063 25 627
Email: cappolus@karasrc.gov.na
mstephanus@kharasog.gov.na

4. Kavango East Regional Council

Governor Hon. Samuel K Mbambo
Tel No: 066 267 243
Email: lthikusho@kavangorc.gov.na

5. Kavango West Regional Council

Governor Hon. Sirkka Ausiku
Tel No: 066 264 950
Email: hnkadubuli@kavangowestog.gov.na

6. Khomas Regional Council

Governor Hon. Laura Mcleod-Katjirua
Tel No: 061 430 4000
Email: cmafwila@khomasrc.gov.na
ihamana@khomasog.gov.na

7. Kunene Regional Council

Governor Hon. Marius Sheya
Tel No: 065 273 600
Email: gkamseb@kunenerc.gov.na

8. Ohangwena Regional Council

Governor Hon. Usko Nghaamwa
Tel No: 065 264 300
Email: enaimbondi@ohangwenare.gov.na
governor@ohangwenarc.gov.na

9. Omheke Regional Council

Governor Hon. Festus Ueitele
Tel No: 062 566 524
Email: mvaendwanawa@omaheke.gov.na
jrukira@omahekeog.gov.na

10. Omusati Regional Council

Governor Hon. Erginus Endjala
Tel No: 065 251 132
Email: info@omusatirc.gov.na
eamunyela@omusatirc.gov.na

11. Oshana Regional Council

Governor Hon. Elia Irimari
Tel No: 065 220 441
Email: jjsinvula@oshanarc.gov.na
info@oshanarc.gov.na

12. Oshikoto Regional Council

Governor Hon. Henock Kankoshi
Tel No: 065 244 873
Email: mundjelejb@oshikotorc.gov.na

13. Otjozondjupa Regional Council

Governor Hon. Otto Ipinge
Tel No: 067 302 746
Email: vmuukua@otjozondjuparc.gov.na
siyambo@otjozondjupa.gov.na

14. Zambezi Regional Council

Governor Lawrence A Sampofu
Tel No: 066 262 400
Email: rndopu-lubindo@zambeziarc.gov.na

